

FOR LEASE: 21,191 SF

423 CENTRAL PARK AVE

SCARSDALE, NEW YORK · WESTCHESTER COUNTY



21,191 SF

3.6 Acres

106 Parking Spaces

Building built in 1996

Available July 2011

Property has excellent visibility, access and parking

<u>Population</u>		<u>Median HH Income</u>		<u>Daytime Work Population</u>	
1 miles	10,274	1 miles	\$124,912	1 miles	5,881
2 miles	47,717	2 miles	\$109,440	2 miles	20,881
3 miles	118,142	3 miles	\$ 92,377	3 miles	62,020



Adirondack Retail Consultants, Inc.
7611 Merle Ridge
Baldwinsville, NY 13027
Tel: 315-622-7500
Fax: 315-622-7600



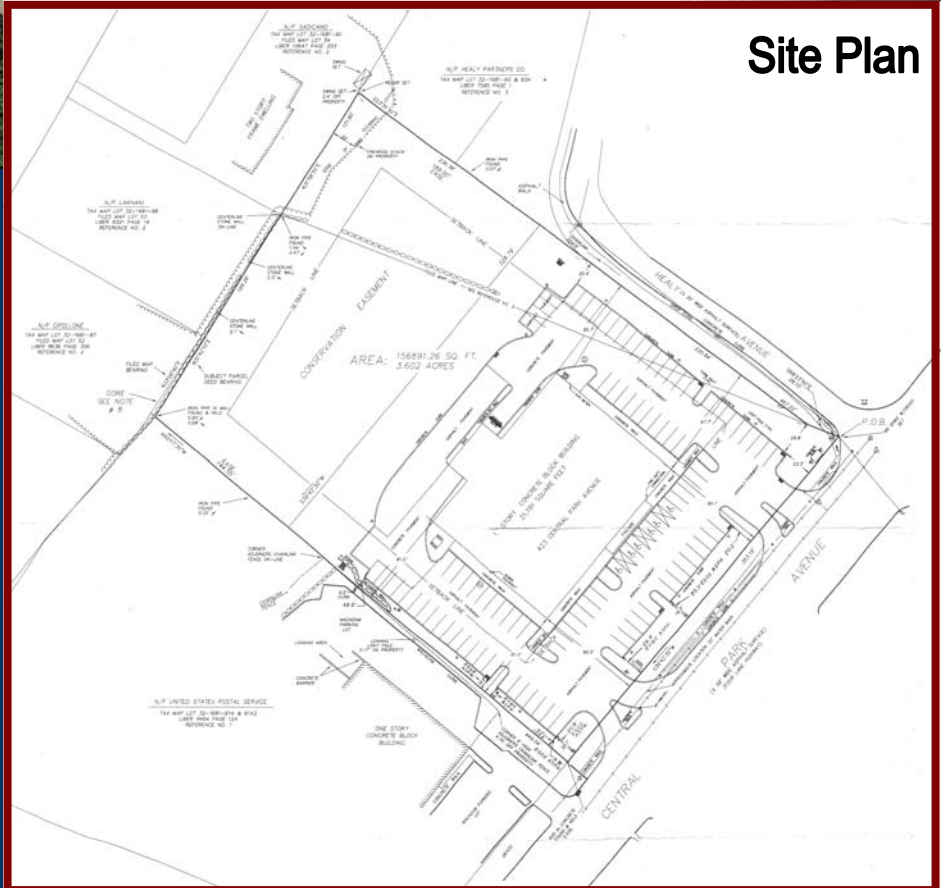
For More Information Contact:

Monique Ward
mward109@twcnj.rr.com

FOR LEASE: 21,191 SF

423 CENTRAL PARK AVE

SCARSDALE, NEW YORK · WESTCHESTER COUNTY



Adirondack Retail Consultants, Inc.
 7611 Merle Ridge
 Baldwinsville, NY 13027
 Tel: 315-622-7500
 Fax: 315-622-7600



For More Information Contact:

Monique Ward
 mward109@twcny.rr.com

Information set forth is from sources we deem reliable and is subject to prior sales, lease, withdrawal without notice or change in prices and conditions. No representation is made as to the accuracy of any information furnished.